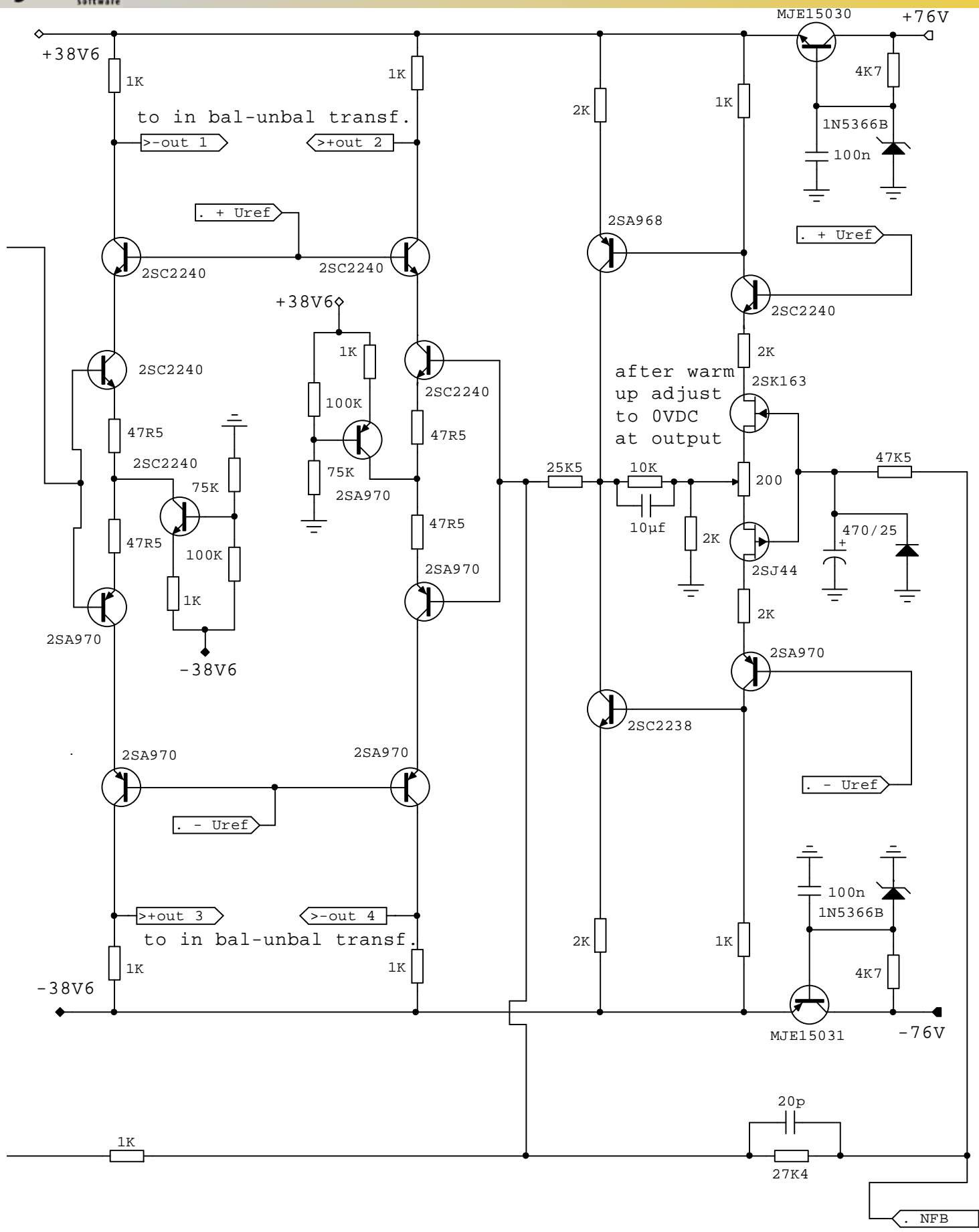


2SJ44 (NEC) = IFR44 (www.interfet.com)

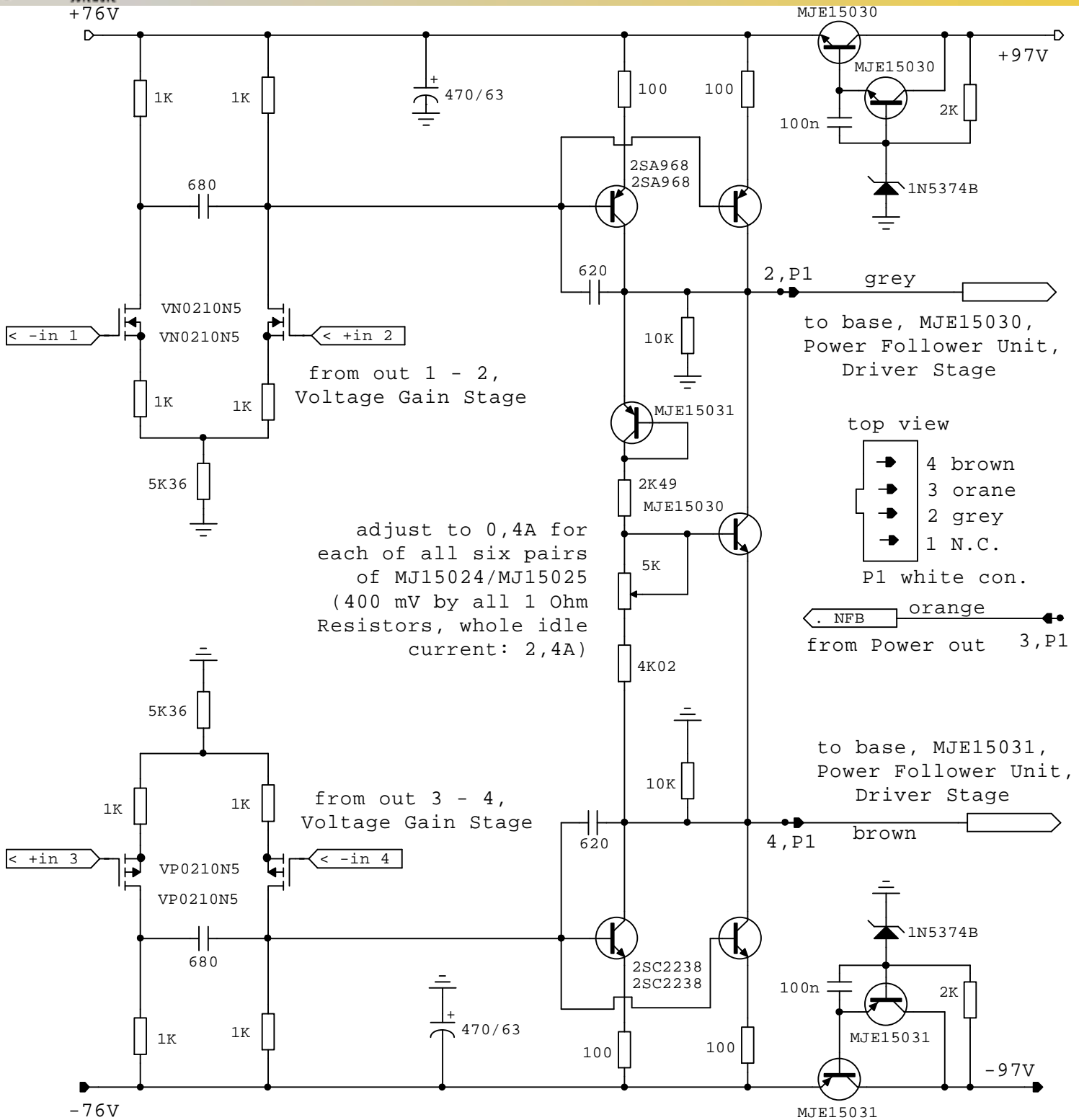
NEC-jFETs 2SK163/2SJ44 Replacement:

<http://www.semicon.toshiba.co.jp/openb2b/websearch/productDetails.jsp?partKey=2SJ103>

<http://www.semicon.toshiba.co.jp/openb2b/websearch/productDetails.jsp?partKey=2SK246>

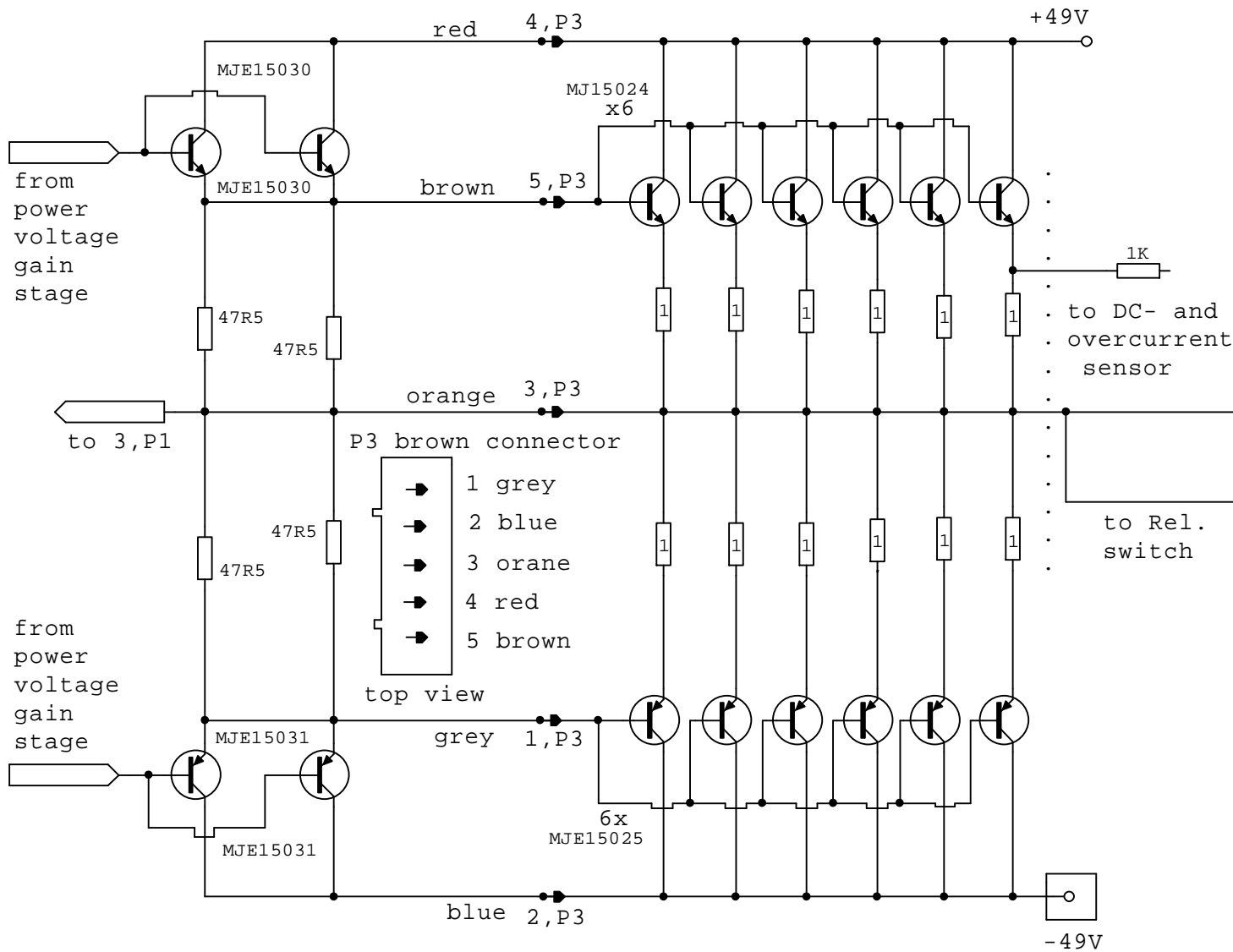


Krell KSA100 EUR 1989
Voltage Gain Stage
Zero DC Servo

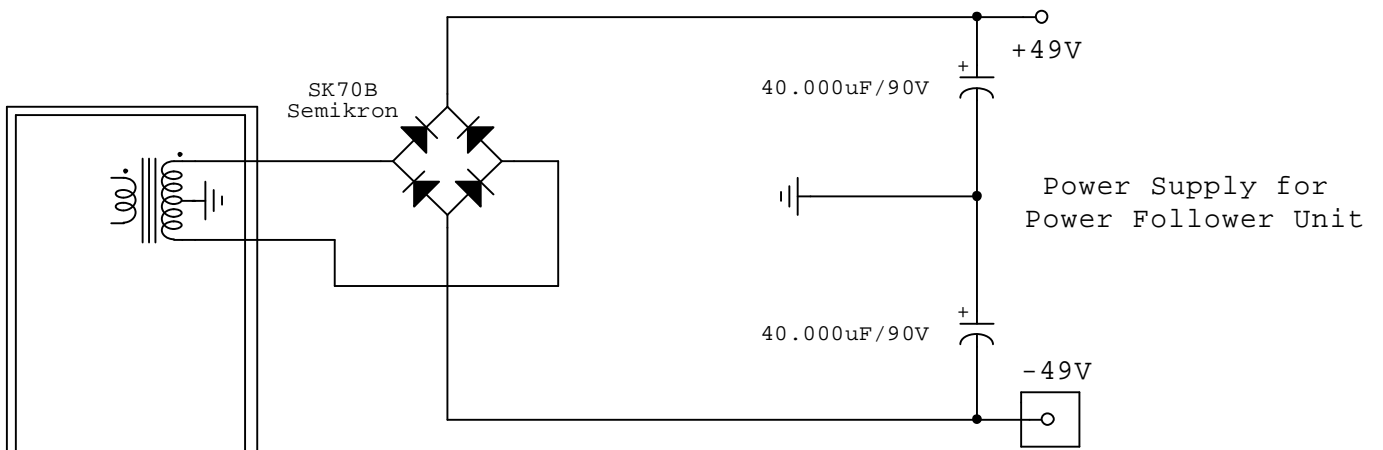


VN + VP 0210N5: Supertex Inc.
http://www.datasheetcatalog.com/datasheets_pdf/V/N/0/2/VN0210N5.shtml
http://www.datasheetcatalog.com/datasheets_pdf/V/P/0/2/VP0210N5.shtml

Krell KSA100 EUR 1989
 bal-unbal transformer
 power voltage gain
 stage and Bias

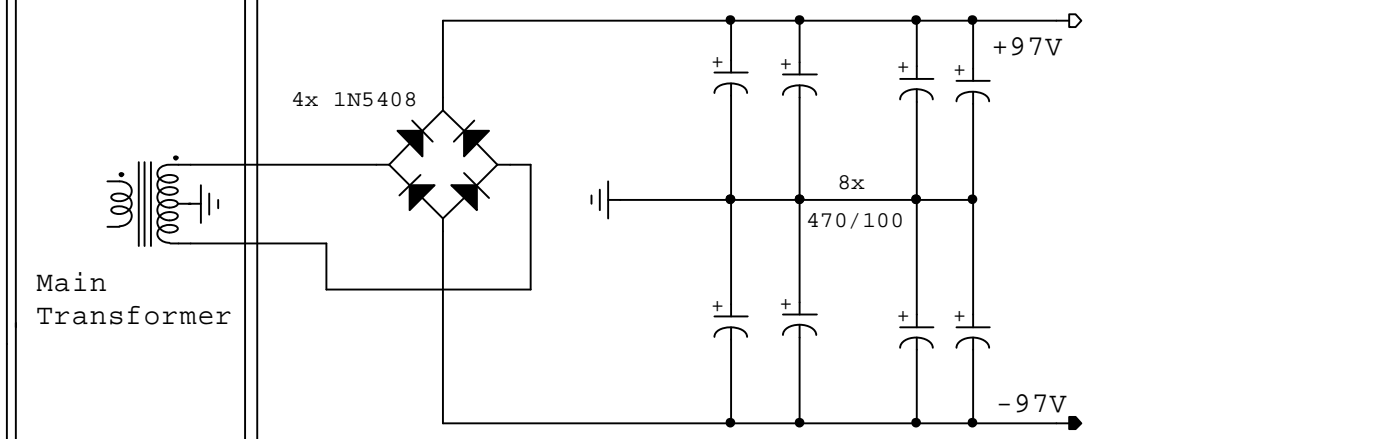


Krell KSA100 EUR 1989
Power Follower Unit



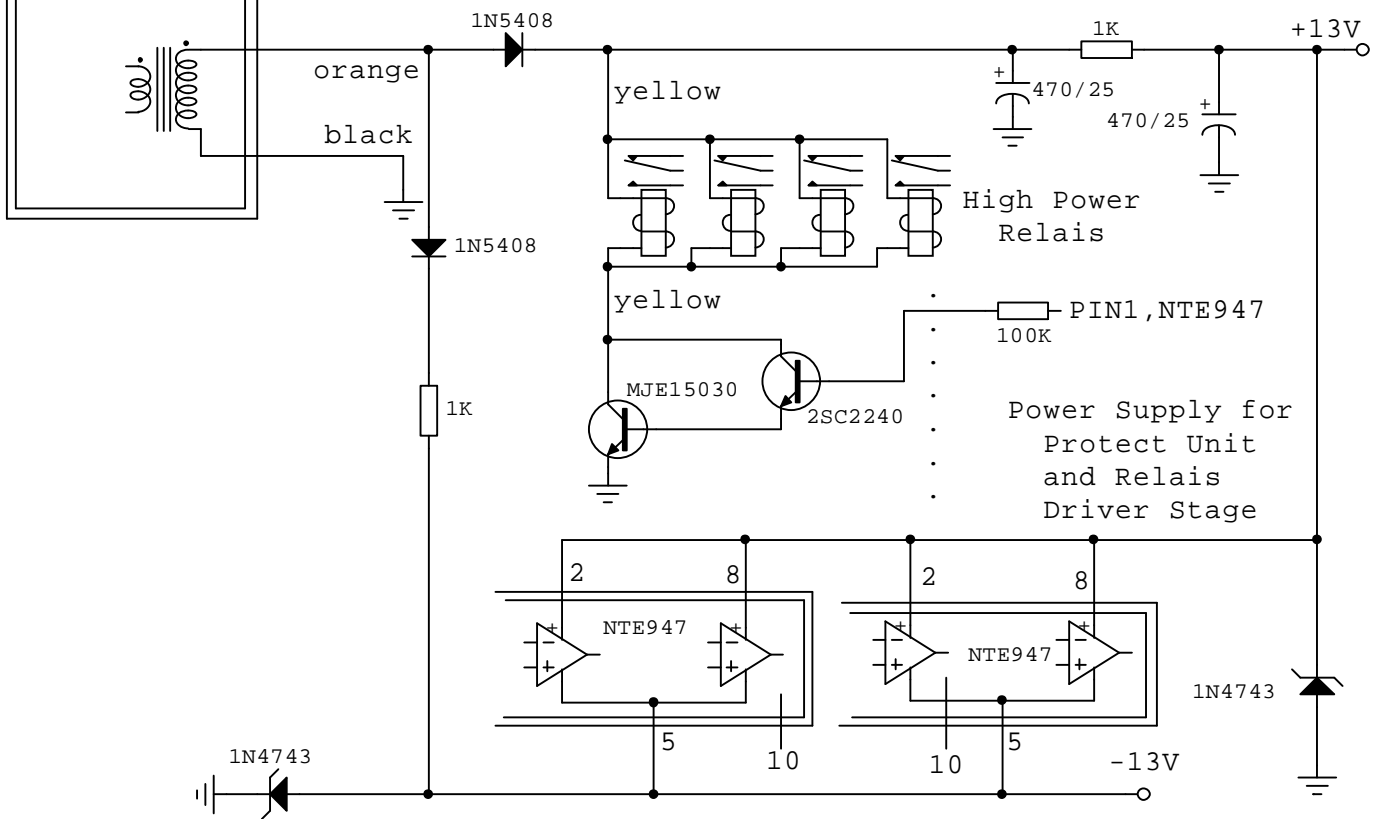
SK70B: larger rectifier compare to orig. version

<http://www.semikron.com/internet/ds.jsp?file=962.html>

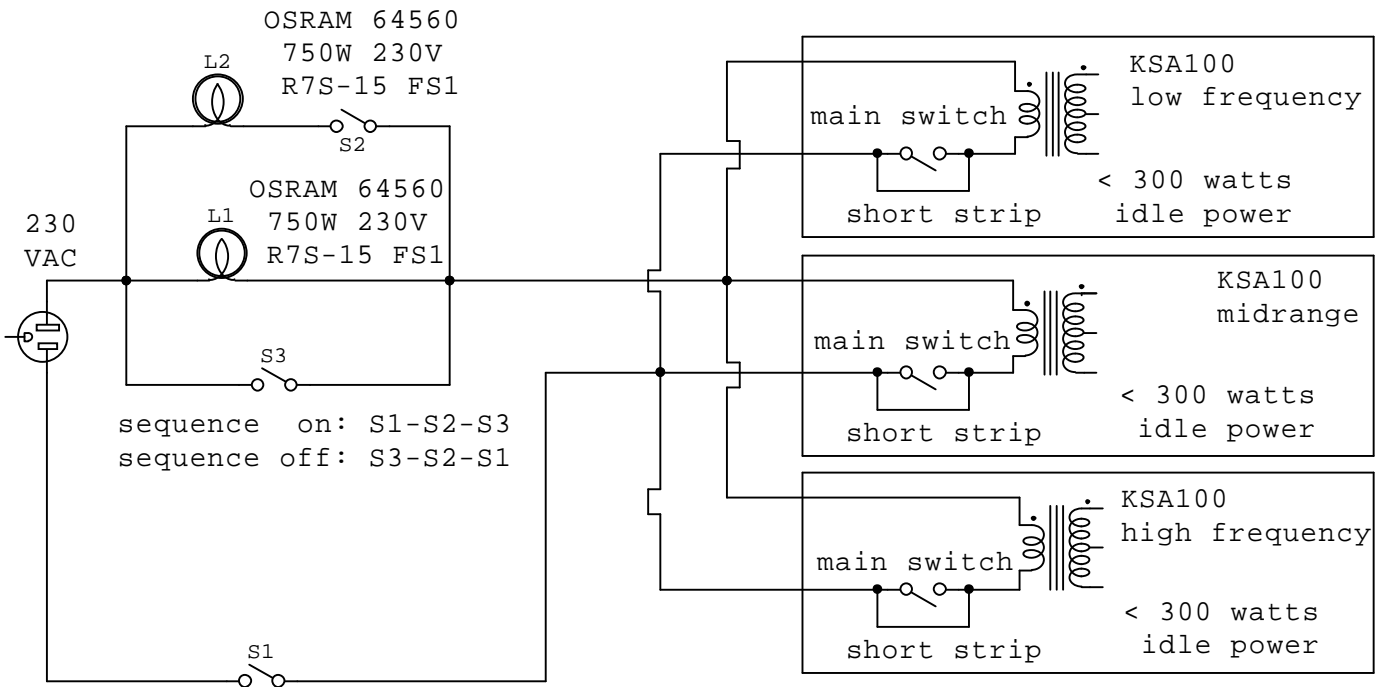


Power Supply for all units without Power Follower and Protect units

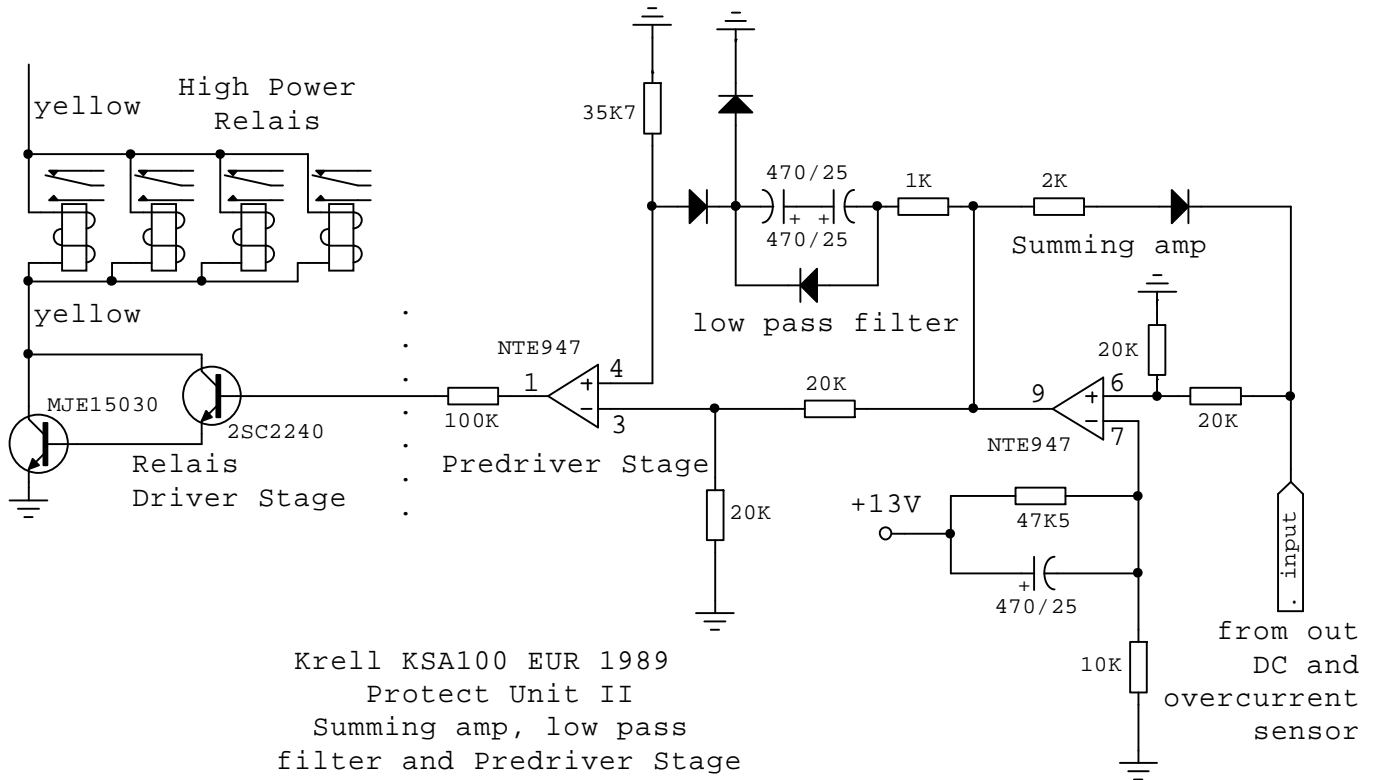
Krell KSA100 EUR 1989 Power Supplies



Power Supply for Protect Unit and Relays Driver Stage



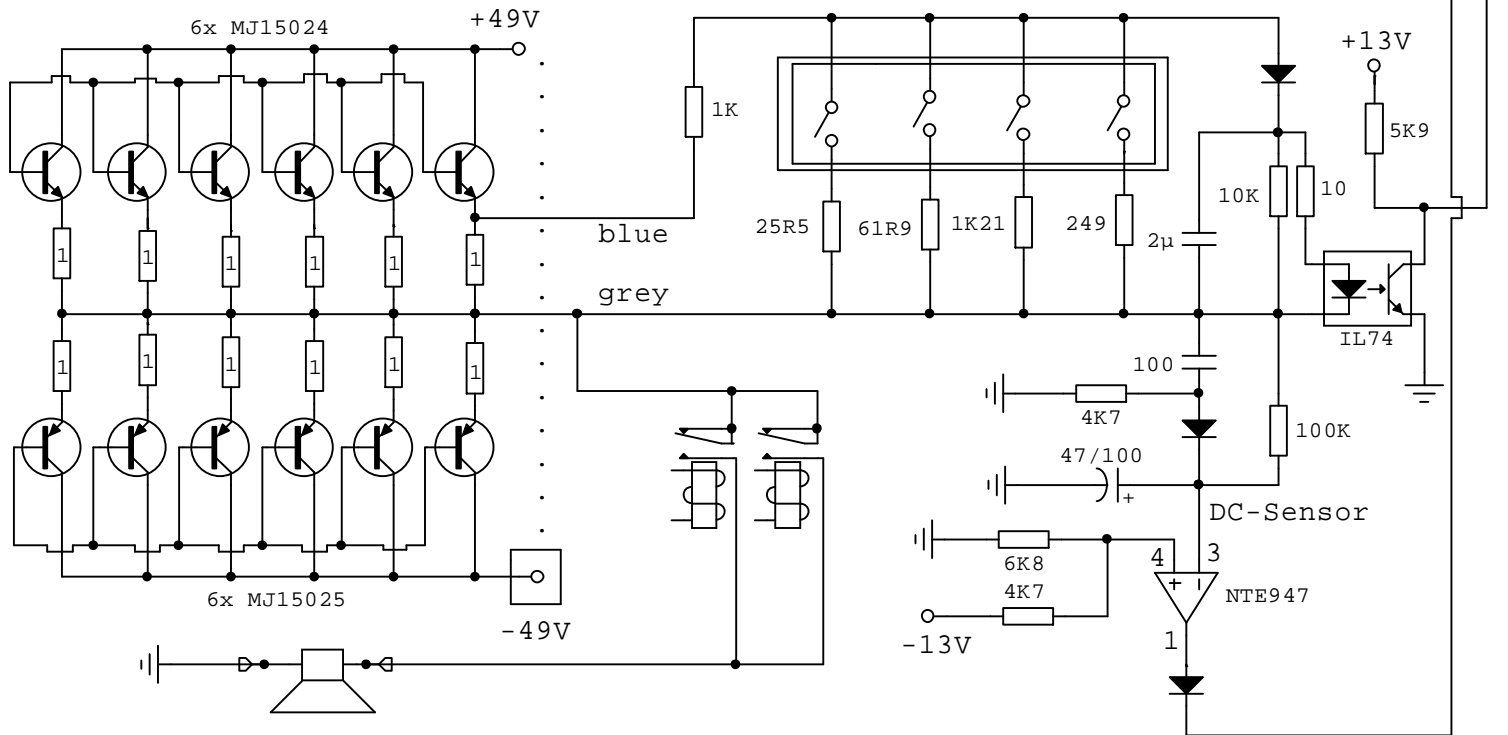
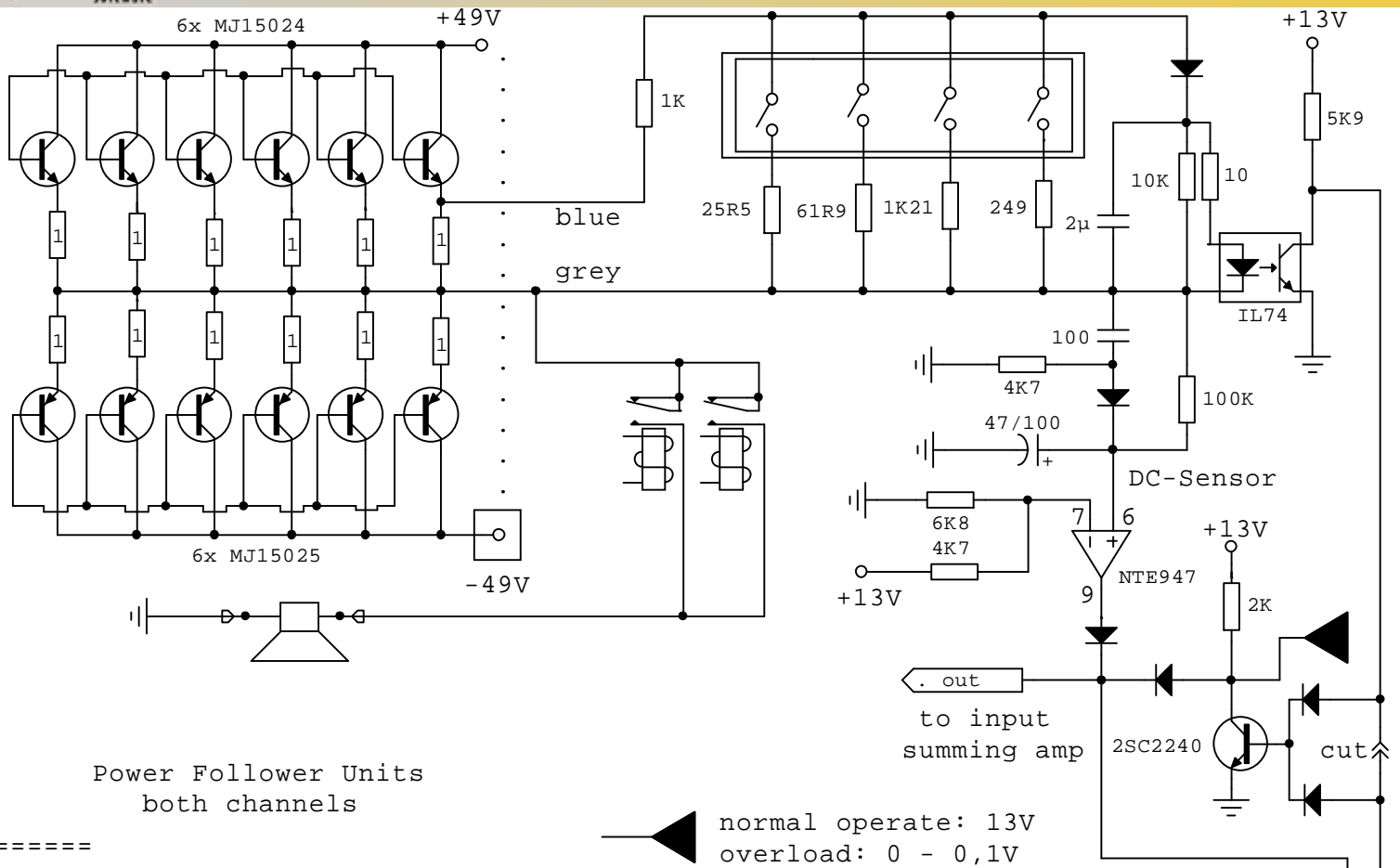
solution for simple but effective inrush current limiter to switch on simultaneous three KSA-100 units without any current transients



Krell KSA100 EUR 1989
Protect Unit II
Summing amp, low pass
filter and Predriver Stage

<http://nte01.nteinc.com/nte/NTEMasterxRef.nsf/f5c1eb36d4d2eff185256b3a006a3555/8ca4e2f79cb8fc8485256a55006d182d?OpenDocument>

<http://www.alldatasheet.com/datasheet-pdf/pdf/NTE/NTE947.html>



Krell KSA100 EUR 1989
Protect Unit I
DC and Overcurrent
sensor CH L + R