

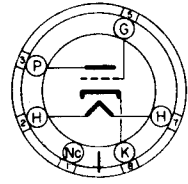
## TUNG-SOL

HIGH-MU  
TRIODE POWER AMPLIFIER

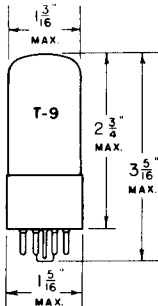
UNIPOTENTIAL CATHODE

HEATER  
6.3 VOLTS 0.4 AMPERE  
AC OR DC

GLASS BULB



6Q-0-0



INTERMEDIATE 6 PIN OCTAL BASE

THE TUNG-SOL 6AC5GT/G IS A HIGH MU POWER OUTPUT TRIODE DESIGNED FOR SERVICE IN DYNAMIC COUPLED CIRCUITS USING A TYPE 76, 6P5GT/G OR 6J5GT/G AS A DRIVER. TWO TUNG-SOL 6AC5GT/G'S MAY BE USED AS A ZERO BIAS CLASS B AMPLIFIER.

## RATINGS

MAXIMUM PLATE VOLTAGE	250	VOLTS
MAXIMUM PEAK PLATE CURRENT	110	MA.
MAXIMUM AVERAGE PLATE DISSIPATION	10	WATTS

## AVERAGE CHARACTERISTICS

PLATE VOLTAGE	250	VOLTS
CONTROL GRID VOLTAGE	+13	VOLTS
PLATE CURRENT	32	MA.
GRID CURRENT	5	MA.
PLATE RESISTANCE	36 700	OHMS
TRANSCONDUCTANCE	3400	μMHOS
AMPLIFICATION FACTOR	125	

## TYPICAL OPERATING CONDITIONS AND CHARACTERISTICS

## CLASS B POWER AMPLIFIER

VALUES ARE FOR TWO TUBES UNLESS OTHERWISE SPECIFIED

PLATE VOLTAGE	250	VOLTS
CONTROL GRID VOLTAGE	0	VOLTS
PEAK AF SIGNAL VOLTAGE GRID TO GRID	70	VOLTS
ZERO-SIGNAL PLATE CURRENT	5	MA.
PEAK PLATE CURRENT PER TUBE	110	MA.
EFFECTIVE LOAD RESISTANCE PLATE TO PLATE	10 000	OHMS
PEAK POWER INPUT	.950	WATT
POWER OUTPUT APPROX.	8	WATTS

CONTINUED NEXT PAGE

### TYPICAL OPERATION

#### DYNAMIC COUPLED CLASS A<sub>1</sub> AMPLIFIER

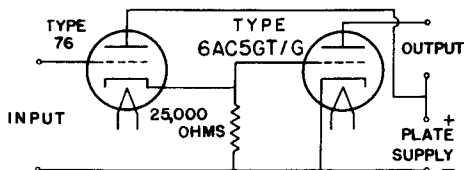
WITH TYPE 6P5GT/G OR 76 AS DRIVER

PLATE SUPPLY VOLTAGE	250	VOLTS
CONTROL GRID VOLTAGE <sup>A</sup>	0	VOLT
DRIVER GRID RESISTOR <sup>MAX.</sup>	1.0	MEG OHM
ZERO-SIGNAL PLATE CURRENT	32	MA.
AVERAGE PLATE CURRENT OF DRIVER	5.5	MA.
INPUT SIGNAL TO DRIVER (RMS)	16.5	VOLTS
LOAD RESISTANCE	7000	OHMS
TOTAL HARMONIC DISTORTION	10	PER CENT
POWER OUTPUT <sup>B</sup>	3.7	WATTS

<sup>A</sup> BIAS VOLTAGE FOR BOTH THE 6AC5GT/G AND THE DRIVER TUBE IS DEVELOPED BY THE "DYNAMIC COUPLED" CIRCUIT CONNECTION SHOWN BELOW. THE 25 000 OHM RESISTOR IS CONNECTED BETWEEN GRID AND CATHODE OF THE 6AC5GT/G TO PREVENT A CURRENT SURGE OCCURRING WHEN THE TUBE IS HEATING.

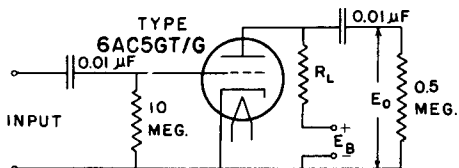
<sup>B</sup> AT THE POINT WHERE DRIVER GRID CURRENT BEGINS TO FLOW, THE POWER OUTPUT IS 4.3 WATTS WITH 16% DISTORTION.

#### DYNAMIC - COUPLED CONNECTION



#### RESISTANCE COUPLED AMPLIFIER OPERATION

ZERO CATHODE RESISTOR CIRCUIT



THE CIRCUITS SHOWN HEREIN ARE FOR YOUR INFORMATION. TUNG-SOL LAMP WORKS INC. ASSUMES NO LIABILITY WITH RESPECT TO THEIR USE IN THE INFRINGEMENT OF ANY PATENT.

PLATE  
1174-1